

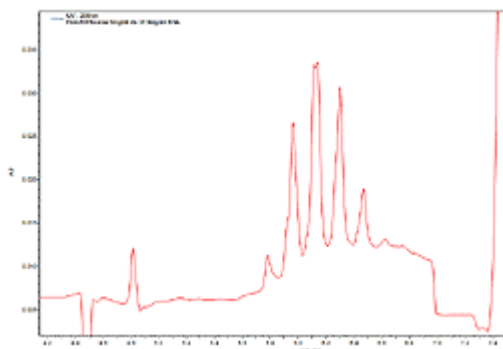


## Separation of Transferrin Isoforms

Buffers and sample saturation solution from the CEoFix CDT™ kit were used to separate Bovine Holo Transferrin (Sigma T1283) with a purity about 95% of protein. Methodology used was supplied with the kit and no variations were made.

### Discussion and Rationale:

Separation of glycol proteins and their isoforms is very important. Using this complete kit of premade buffers, it is easy to identify isoforms by Capillary Electrophoresis. Using the different isoforms as disease markers is a very important potential for this test.



Peaks:  
Between 5.8 and 6.5 minutes:  
2-sialo Tf  
3-sialo Tf  
4-sialo Tf  
5-sialo Tf  
6-sialo Tf

### Method Conditions:

**Voltage: 30kV**  
**Capillary: MicroSolvCE 50µm, Bare Fused Silica**  
**Injection: 5 sec pressure**  
**Run Buffer: CEoFix Accelerator (supplied) pH 8.5**  
**Detection: UV 200nm**  
**Sample: Holo Transferrin 9mg & 250µl BSA 50mg/ml & 50µl Fe<sup>3</sup> Solution**  
**Polarity: Normal**  
**Temperature: 30°C**  
**Pretreatment of Samples: Addition of Fe<sup>3</sup> Solution (supplied), No incubation of serum**