



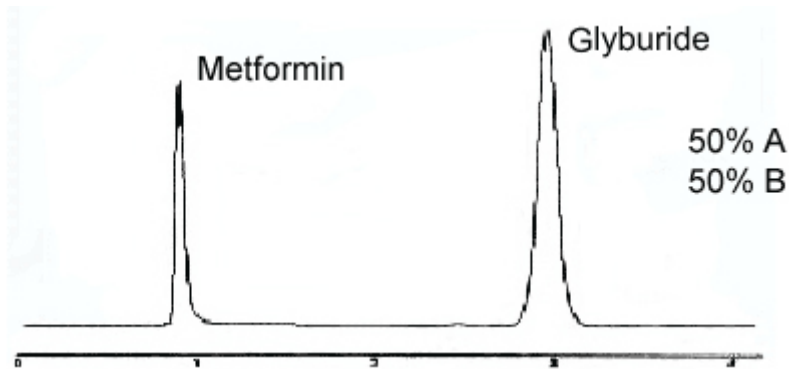
HPLC  
PRODUCTS

Cogent UDC-  
Cholesterol™  
Metformin & Glyburide



## HPLC Application Sheet

Metformin & Glyburide Isocratic Separation



### PEAKS

1. Metformin
2. Glyburide

### Method Conditions

Column: Cogent UDC-Cholesterol™

Catalog No.: 69069-7.5

Dimensions: 75mm x 4.6mm ID

Mobile Phase:

50% A: Water with 0.05% H<sub>3</sub>PO<sub>4</sub> (pH 2.18)

50% B: Acetonitrile with 0.05% H<sub>3</sub>PO<sub>4</sub>

Detection: UV, 210nm

Flow Rate: 1ml/minute

Back Pressure: 600 psi

### Discussion of the Chromatogram:

Metformin is a highly polar compound that does not usually retain in reverse phase separations. Glyburide is a relatively non polar compound. Getting the two to separate on the same column is very unique. It should be noted that with changes in the percentages of the mobile phase, the peaks for these two anti-diabetic compounds can be made to SWAP elution order or to co-elute them.