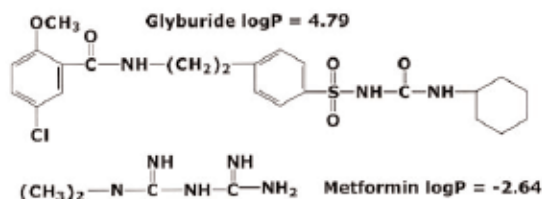


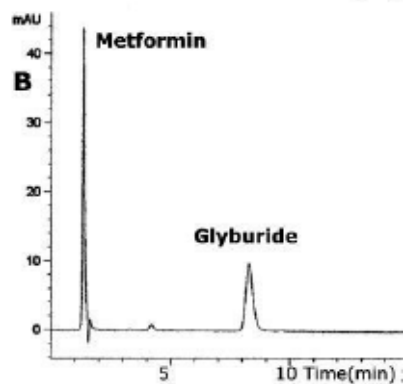
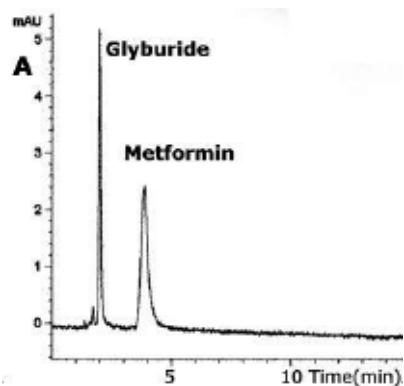
Bidentate C18

with TYPE-C Silica™



Glyburide and Metformin

Separation of “Highly Polar” and “Non-Polar” Compounds in one isocratic run using Reverse Phase Solvents.



Method Conditions

Column: Cogent Bidentate C-18, 4 μm, 100Å
Catalog No.: 40018-75P
Dimensions: 4.6 x 75 mm
Mobile phase: A: 85:15 acetonitrile, DI water + 0.5% formic acid
 B: 50:50 acetonitrile, DI water + 0.5% formic acid
Flow rate: 0.5 mL/minute
Injection Volume: 1 μL
Sample: 100 μg/μL
Detection: UV 254 nm

Discussion

The polar compound, Metformin, and the nonpolar compound Glyburide, can be retained on the same stationary phase (see A & B), utilizing the unique properties of the hydride based Cogent Bidentate C18 column. Depending on the mobile phase composition either Metformin or Glyburide can be retained longer.

Note: elution order was confirmed by LC-MS, APCI+, with single ion monitoring Metformin (m/z 130) and Glyburide (m/z 369).

For more information visit www.MTC-USA.com

Cat. No.	Description
40018-75P	Cogent Bidentate C18 HPLC Column. 4μm, 100Å 75mm x 4.6mm ID. Standard End Fittings.

